

Frimley Health and Care



Frimley Health and Care Integrated Care System

Integrated Care Partnership Update

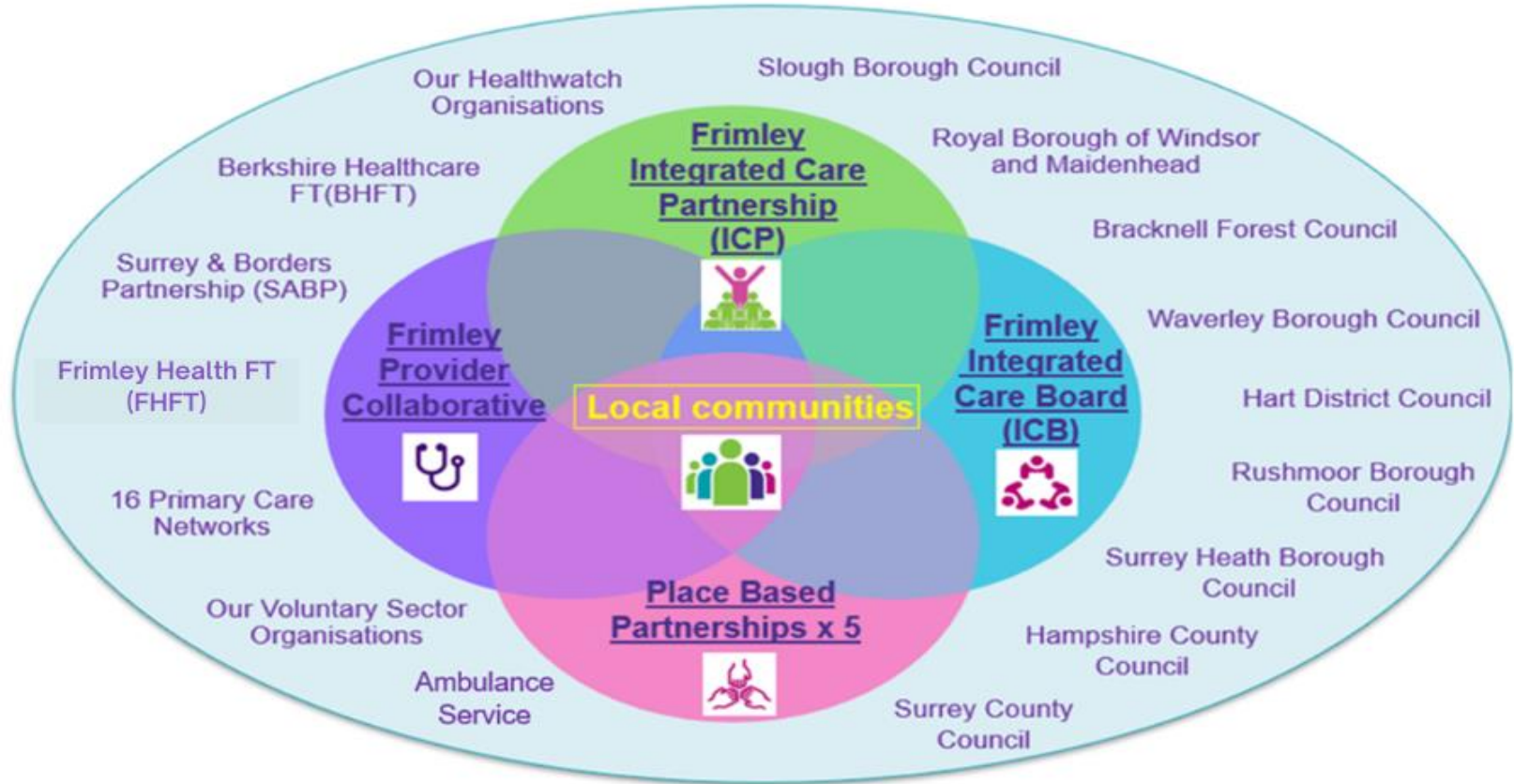
October 2022



ASCOT • BRACKNELL • FARNHAM • MAIDENHEAD • NORTH EAST HAMPSHIRE • SLOUGH • SURREY HEATH • WINDSOR



Our Emerging System Architecture & Ways of Working





Frimley Public Services Partnership aka 'The Integrated Care Partnership' (ICP)

The ICP is a statutory joint committee between the Local Authorities and the Frimley Integrated Care Board (ICB).

It has a critical role to play in the ICS, facilitating joint action to improve health and care outcomes and experiences across the population, and influencing the wider determinants of health, including creating healthier environments and inclusive and sustainable economies.





Progress Update on ICP Establishment

- Since moving to our new statutory configuration in July 2022, we have been working to establish and develop the four component parts of our new System Architecture – The ICB, ICP, Provider Collaborative and Place.
- System partners have been working together since September 2021 to design the Frimley Integrated Care Partnership (ICP) through a series of “Design Group” sessions between representatives from our partnership
- During the Summer of 2022, the ICB Chair met with local leaders, including elected members, to prepare for the first meeting of the ICP in September.
- The inaugural meeting of the ICP took place on 29th September 2022 and was held as a Development Session for ICP members to consider the strategic remit of the group and how it can work most effectively together.
- The ICP considered the three core components of its remit and examined the ways in which these can be discharged within the national framework requirements (including the production of a refreshed ICS Strategy by December 2022)
- The ICP will meet again in November to continue its work together – a plan for this session is set out as a part of this update to the ICB Board.



The ICP Remit: 3 core components

Consider and set the strategic intent of the partnership; act as final approver of the ICS Strategy, including the proposed programmes of work, outcomes and intended benefits;

Act as an objective “guardian” of the ICS vision and values, putting the population’s needs and the successful operation of the ICS ahead of any sector or organisation specific areas of focus;

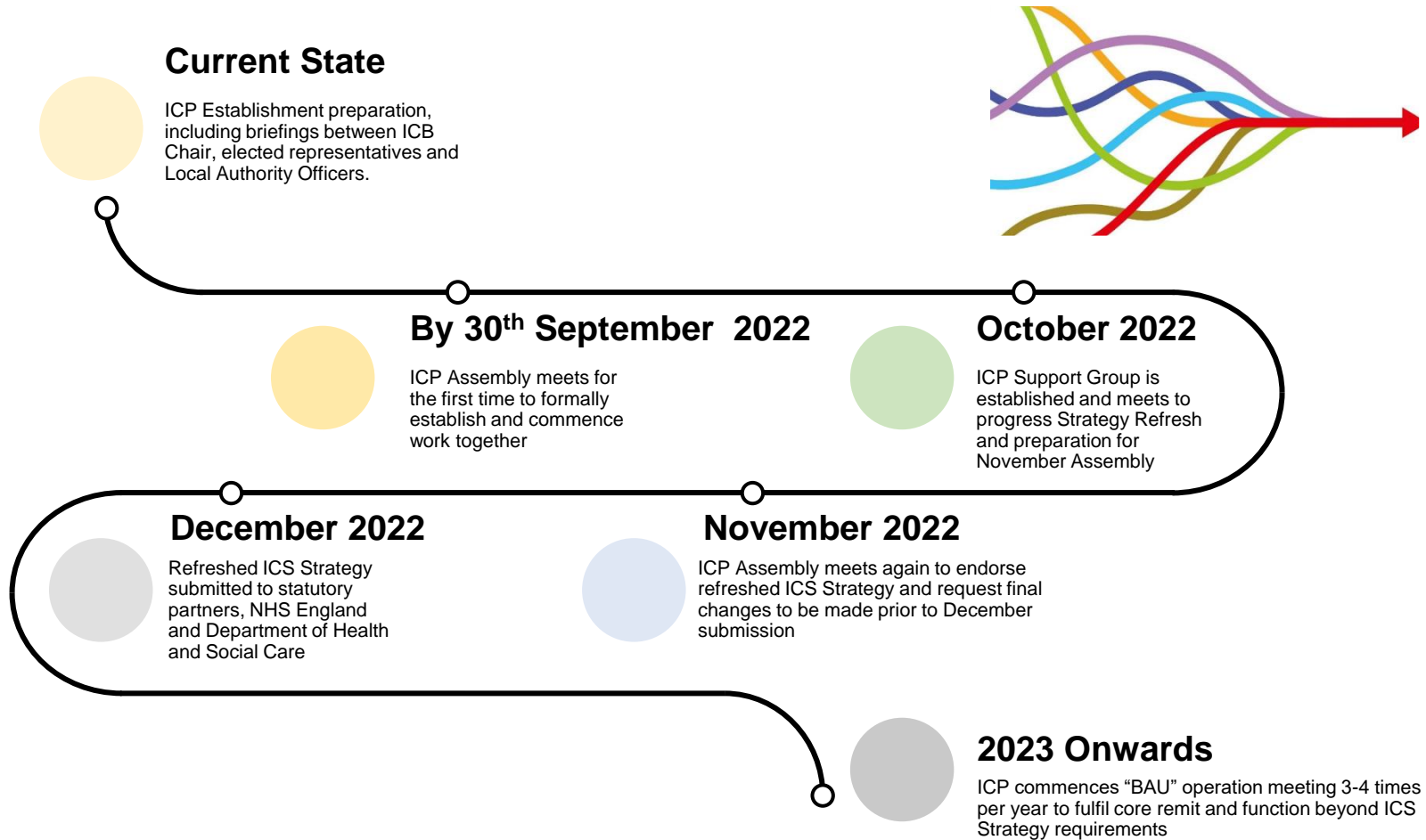
Provide a forum for the consideration of Wider Determinants of Health and Health Inequalities, taking fullest advantage of the opportunities arising to hear the views and perspectives of the broadest range of local stakeholders and democratic representatives.



Frimley ICP creates a platform for its entire membership. Local Authorities, NHS, Healthwatch, Voluntary, Charity and Social Enterprise (VCSE) organisations come together to form an ‘assembly’. The assembly ensures a voice for those who can speak on behalf of their communities and bring a very new approach to the design of our strategic ambitions.



Indicative Roadmap Timeline / Sequence





Current ICS Strategy and Development History – journey so far



”Creating Healthier Communities” was published in 2019 as the first Frimley ICS Strategy. The strategy was designed following significant co-production between partner organisations, the third sector, our workforce, patients and the public.

The strategy was heavily informed by the data and insight available from the Connected Care platform and led to the formation of six Strategic Ambitions (left) which have comprised the programme architecture for strategy delivery between 2020 and 2022.

The two Objectives of the Strategy are:

- Improving Healthy Life Expectancy
- Reducing Health Inequalities

All of our strategic intent should be aligned to these outcomes.



Draft Proposal on Future Strategy Shape

We will want to test with partner organisations through the ICP:

- Whether our two overarching objectives still reflect the strategic direction of our partnership
- How the six strategic ambitions can be further strengthened to enable us to deliver improvement
- Do we wish to retain the Sponsor / Convenor model? If so – identifying new individuals for the ambitions will be essential

Starting focus questions on the existing ambitions:





Emerging Plan for November 2022 ICP Meeting:

Establish small co-design group to lead on design of November ICP - in progress

Early emerging priorities

- Review the revised interim strategy for the ICP ahead of December submission
- Agree areas for improvement ahead of submission
- Discuss a schedule of work for the ICP and agree focus areas for 2023 and beyond



Evidenced based, drawing on actionable insight from our Connected Care platform and Public Health JSNAs

- We have all of the underlying digital and data architecture required to generate actionable insight for driving improvement
- Five Joint Strategic Needs Assessments are available to our partnership and if used appropriately can be core and complementary to improvement identification
- Benchmarking from Regional and National ALBs (CQC, NHS England, Govt. Departments) can play an important role in triangulating our identified strategic priorities



COMMUNITY
ENGAGEMENT

Our communities and third sector partners have demonstrated a strong desire to be involved in this work

- Building on the work of the Community Deal ambition and the strong history of the three CCGs in this space we should be seeking to create a maximal voice for residents and communities in this refresh
- We must ensure that the approach is inclusive and effective in hearing from all parts of our population, recognising that this may require specialist expertise in achieving successfully
- Building on the work with NHS Charities since 2020 provides an additional new foundation for introducing the third sector to strategic development part of our work together



Making best use of strategies and approaches which are already deployed in the ICS

- The 2019 strategy is still recent and relevant with many of the opportunities identified not yet realised due to the disruption of the last two years. It is essential that this work is not discarded and that retention is prioritised.
- We have been working on other complementary strategies since 2019 which will need to be reflected in this work – new strategies should not be creating or reinforcing silos
- Health and Wellbeing Board strategies have an important role to play in the informing of this refresh, recognising that the ICS strategy should show a scaleable element of value addition which goes beyond individual Health and Wellbeing Board geographies